



CABLE SWEATER (TO KNIT)

BERNAT® SUPER VALUE
BERNAT® BERELLA 4
BERNAT® SATIN

SIZES

To fit bust measurement

Extra-Small/Small

28-34 ins [71-86.5 cm]

Medium

36-38 ins [91.5-96.5 cm]

Large

40-42 ins [101.5-106.5 cm]

Extra-Large

44-46 ins [112-117 cm]

2/3 Extra-Large

48-54 ins [122-137 cm]

4/5 Extra-Large

56-62 ins [142-157.5 cm]

Finished bust

X-Small/Small 37 ins [94 cm]

Medium 42½ ins [108 cm]

Large 44 ins [112 cm]

X-Large 50 ins [127 cm]

2/3 X-Large 57½ ins [146 cm]

4/5 X-Large 67 ins [170.5 cm]

GAUGE

17 sts and 24 rows = 4 ins [10 cm]
 with larger needles in stocking st.

MATERIALS

Bernat® Super Value

(197 g/7 oz/389 m/426 yds)

or **Bernat® Berella 4**

(100 g/3.5 oz/197 m/216 yds)

or **Bernat® Satin**

(100 g/3.5 oz/149 m/163 yds)

Size XS/S: 1070 m/1170 yds

Size M: 1130 m/1235 yds

Size L: 1225 m/1340 yds

Size XL: 1310 m/1435 yds

Size 2/3XL: 1320 m/1450 yds

Size 4/5XL: 1410 m/1540 yds

Sizes 5 mm (U.S. 8) and 5.5 mm (U.S. 9) knitting needles **or size needed to obtain gauge.** Cable needle. 2 st holders.

ABBREVIATIONS

Alt = Alternate.

Beg = Beginning.

C4B = Slip next stitch onto a cable needle and leave at back of work. K3, then K1 from cable needle.

C4F = Slip next 3 stitches onto a cable needle and leave at front of work. K1, then K3 from cable needle.

C5B = Slip next 2 stitches onto a cable needle and leave at back of work. K3, then K2 from cable needle.

C5F = Slip next 3 stitches onto a cable needle and leave at front of work. K2, then K3 from cable needle.

C6B = Slip next 3 stitches onto a cable needle and leave at back of work. K3, then K3 from cable needle.

C6F = Slip next 3 stitches onto a cable needle and leave at front of work. K3, then K3 from cable needle.

Cont = Continue(ity).

Dec = Decrease.

Inc = Increase 1 stitch by knitting into front and back of next stitch.

K = Knit.

K2tog = Knit 2 stitches together.

K2togtbl = Knit 2 stitches together through back loop.

M1 = Make 1 stitch by picking up horizontal loop lying before next stitch and knitting into back of loop.



M1P = Make 1 stitch by picking up horizontal loop lying before next stitch and purling into back of loop.

P = Purl.

Pat = Pattern.

P2tog = Purl 2 stitches together.

P2togtbl = Purl 2 stitches together through back loop.

Rem = Remaining.

Rep = Repeat.

RS = Right side.

St(s) = Stitch(es).

T4B = Slip next stitch onto a cable needle and leave at back of work. K3, then P1 from cable needle.

T4F = Slip next 3 stitches onto a cable needle and leave at front of work. P1, then K3 from cable needle.

T5B = Slip next 2 stitches onto a cable needle and leave at back of work. K3, then P2 from cable needle.

T5F = Slip next 3 stitches onto a cable needle and leave at front of work. P2, then K3 from cable needle.

TW4B = Slip next 2 stitches onto a cable needle and leave at back of work. K2, then P2 from cable needle.

TW4F = Slip next 2 stitches onto a cable needle and leave at front of work. P2, then K2 from cable needle.

TW5B = Slip next 2 stitches onto a cable needle and leave at back of work. K3, then (K1. P1) from cable needle.

TW5F = Slip next 3 stitches onto a cable needle and leave at front of work. (P1. K1), then K3 from cable needle.

T6B = Slip next 3 stitches onto a cable needle and leave at back of work. K3, then P3 from cable needle.

T6F = Slip next 3 sts onto a cable needle and leave at front of work. P3, then K3 from cable needle.

WS = Wrong side.

INSTRUCTIONS

The instructions are written for smallest size. If changes are necessary for larger sizes the instructions will be written thus (). When only one number is given, it applies to all sizes. For ease in working, circle all numbers pertaining to your size.

Panel Pat A (worked over 50 sts) (see chart).

1st row: (RS). P10. K6. P6. C6F. P6. K6. P10.

2nd and alt rows: Knit all knit sts and purl all purl sts as they appear.

3rd row: P10. K6. P5. C4B. C4F. P5. K6. P10.

5th row: P10. C6B. P4. C4B. K2. C4F. P4. C6F. P10.

7th row: P7. C6B. C6F. C4B. K4. C4F. C6B. C6F. P7.

9th row: P7. K10. T5B. K6. T5F. K10. P7.

11th row: P7. K8. TW5B. P2. C6B. P2. TW5F. K8. P7.

13th row: P7. K6. C5B. K1. P3. K6. P3. K1. C5F. K6. P7.

15th row: P7. K3. C6F. K3. P3. K6. P3. K3. C6B. K3. P7.

17th row: P7. K1. C5B. K6. P3. C6B. P3. K6. C5F. K1. P7.

19th row: P6. C5B. K8. P3. K6. P3. K8. C5F. P6.

21st row: P4. C5B. K10. P3. K6. P3. K10. C5F. P4.

23rd row: P3. T4B. T6F. T6B. P3. C6B. P3. T6F. T6B. T4F. P3.

25th row: P2. T4B. P4. C6B. P6. K6. P6. C6F. P4. T4F. P2.

27th row: P1. T4B. P5. (K6. P6) twice. K6. P5. T4F. P1.

29th row: P1. K3. P6. K6. P6. C6B. P6. K6. P6. K3. P1.

31st row: P1. T4F. P5. (K6. P6) twice. K6. P5. T4B. P1.

33rd row: P2. T4F. P4. C6B. P6. K6. P6. C6F. P4. T4B. P2.

35th row: P3. T4F. C6B. C6F. P3. C6B. P3. C6B. C6F. T4B. P3.

37th row: P4. T5F. K10. P3. K6. P3. K10. T5B. P4.

39th row: P6. TW5F. K8. P3. K6. P3. K8. TW5B. P6.

41st row: P7. K1. C5F. K6. P3. C6B. P3. K6. C5B. K1. P7.

43rd row: P7. K3. C6B. K3. P3. K6. P3. K3. C6F. K3. P7.

45th row: P7. K6. C5F. K1. P3. K6. P3. K1. C5B. K6. P7.

47th row: P7. K8. C5F. P2. C6B. P2. C5B. K8. P7.

49th row: P7. K10. C5F. K6. C5B. K10. P7.

51st row: P7. T6F. T6B. T4F. K4. T4B. T6F. T6B. P7.

53rd row: P10. C6F. P4. T4F. K2. T4B. P4. C6B. P10.

55th row: P10. K6. P5. T4F. T4B. P5. K6. P10.

56th row: As 2nd row.
These 56 rows form Panel Pat A.

Panel Pat B (worked over 11 sts).

1st row: (RS). P1. TW4F. P2. K4.

2nd row: P4. K2. P2. K3.

3rd row: P3. C4F. TW4F.

4th row: P2. K2. P4. K3.

5th row: P1. TW4B. TW4F. K2.

6th row: P4. K4. P2. K1.

7th row: P1. K2. P4. C4F.

8th row: As 6th row.

These 8 rows form Panel Pat B.

Panel Pat C (worked over 11 sts).

1st row: (RS). K4. P2. TW4B. P1.

2nd row: K3. P2. K2. P4.

3rd row: TW4B. C4B. P3.

4th row: K3. P4. K2. P2.

5th row: K2. TW4B. TW4F. P1.

6th row: K1. P2. K4. P4.

7th row: C4B. P4. K2. P1.

8th row: As 6th row.

These 8 rows form Panel Pat C.

BACK

****With smaller needles, cast on 74 (86-90-102-118-138) sts.**

1st row: (RS). (K1. P1) 5 (8-9-12-16-21) times. (K3. P2) 3 times. (K4. P6) twice. K4. (P2. K3) 3 times. (P1. K1)

5 (8-9-12-16-21) times.

2nd row: (P1. K1) 5 (8-9-12-16-21) times. (P3. K2) 3 times. (P4. K6) twice. P4. (K2. P3) 3 times. (K1. P1) 5 (8-9-12-16-21) times.

Rep last 2 rows 9 times more, then 1st row once.

Next row: (WS). (P1. K1) 5 (8-9-12-16-21) times. (P2. M1P. P1. K2) twice. M1. P2. M1P. P1. K1. M1. K1. (P1. M1P. P2. M1P. P1. K6) twice. P1. M1P. P2. M1P. P1. (K1. M1) twice. P3. M1. (K2. P1. M1P. P2) twice. (K1. P1) 5 (8-9-12-16-21) times. 90 (102-106-118-134-154) sts.

Change to larger needles and proceed as follows:

1st row: (RS). K9 (15-17-23-31-41). Work 1st row of Panel Pat B. Work 1st row of Panel Pat A. Work 1st row of Panel Pat C. K9 (15-17-23-31-41).

2nd row: P9 (15-17-23-31-41). Work 2nd row of Panel Pat C. Work 2nd row of Panel Pat A. Work 2nd row of Panel Pat B. P9 (15-17-23-31-41).

Panel Pats A, B and C are now in position.

Cont in pat, inc 1 st each end of needle on 6th and following 14th row. 94 (106-110-122-138-158) sts.

Cont even in pat until work from beg measures 14½ (14½-14½-15½-16½-17½) ins [37 (37-37-39.5-42-44.5) cm], ending with a WS row.

Shape armholes: Keeping cont of pat, cast off 5 (8-8-10-12-16) sts beg of next 2 rows. 84 (90-94-102-114-126) sts. Keeping cont of pat, dec 1 st each end of needle on next 3 (3-3-5-7-9) rows, then every following alt row 2 (5-5-4-5-7) times. 74 (74-78-84-90-94) sts.**

Cont even in pat until armhole measures 8 (8-8½-8½-9-9½) ins [20.5 (20.5-21.5-21.5-23-24) cm], ending with a WS row.

Shape shoulders: Cast off 7 (7-8-9-10-11) sts beg next 2 rows, then 8 (8-9-10-11-11) sts beg following 2 rows. Leave rem 44 (44-44-46-48-50) sts on a st holder.

FRONT

Work from ** to ** as given for Back.

Cont even in pat until armhole measures 5 (5-5-5½-5½) ins [12.5 (12.5-12.5-12.5-14-14) cm], ending with a WS row.

Shape neck: 1st row: Pat 20 (20-22-24-26-27) sts (neck edge). **Turn.** Leave rem sts on a spare needle.

Dec 1 st at neck edge on next 4 rows, then following alt row once. 15 (15-17-19-21-22) sts.

Cont even in pat until armhole measures 8 (8-8½-8½-9-9½) ins [20.5 (20.5-21.5-21.5-23-24) cm], ending with a WS row.

Shape shoulder: Cast off 7 (7-8-9-10-11) sts beg of next row. Work 1 row even. Cast off rem 8 (8-9-10-11-11) sts.

With RS of work facing, slip next 34 (34-34-36-38-40) sts onto a st holder. Join yarn to rem sts and pat to end of row.

Dec 1 st at neck edge on next 4 rows, then following alt row once. 15 (15-17-19-21-22) sts.

Cont even in pat until armhole measures 8 (8-8½-8½-9-9½) ins [20.5 (20.5-21.5-21.5-23-24) cm], ending with a RS row.

Shape shoulder: Cast off 7 (7-8-9-10-11) sts beg of next row. Work 1 row even. Cast off rem 8 (8-9-10-11-11) sts.

SLEEVES

With smaller needles, cast on 47 (47-47-51-55-55) sts.

1st row: (RS). (K1. P1) 6 (6-6-7-8-8) times. K4. P2. K4. P1. K1. P1. K4. P2. K4. (P1. K1) 6 (6-6-7-8-8) times.

2nd row: (P1. K1) 6 (6-6-7-8-8) times. P4. K2. P4. K1. P1. K1. P4. K2. P4. (K1. P1) 6 (6-6-7-8-8) times.

Rep last 2 rows 13 times more.

Change to larger needles and proceed as follows:

1st row: (RS). K11 (11-11-13-15-15). Work 1st row of Panel Pat B. P1. K1. P1. Work 1st row of Panel Pat C. K11 (11-11-13-15-15).

2nd row: P11 (11-11-13-15-15). Work 2nd row of Panel Pat C. K1. P1. K1. Work 2nd row of Panel Pat B. P11 (11-11-13-15-15).

Panel Pats B and C are now in position.

Keeping cont of pat, inc 1 st each end of needle on next and every following 8th (6th-6th-4th-2nd-2nd) row to 63 (67-71-63-69-93) sts, then every following 10th (8th-8th-6th-4th-4th) row to 65 (71-77-81-95-105) sts, taking inc sts into stocking st.

Cont even in pat until work from beg measures 17½ (18-18½-18½-17-16) ins [44.5 (45.5-47-47-43-40.5) cm], ending with a WS row.

Shape top: Cast off 3 (4-4-5-6-8) sts beg next 2 rows. 59 (63-69-71-83-89) sts.

Next row: (RS). K2tog. Pat to last 2 sts. K2togtbl.

Next row: Work even in pat.

Rep last 2 rows 8 (9-8-9-15-18) times more. 41 (43-51-51-51-51) sts.

Next row: (RS). K2tog. Pat to last 2 sts. K2togtbl.

Next row: P2togtbl. Pat to last 2 sts. P2tog.

Rep last 2 rows to 9 (9-11-11-13-15) sts. Cast off.

FINISHING

Pin garment pieces to measurements. Cover with a damp cloth, leaving cloth to dry.

Collar: Sew right shoulder seam.

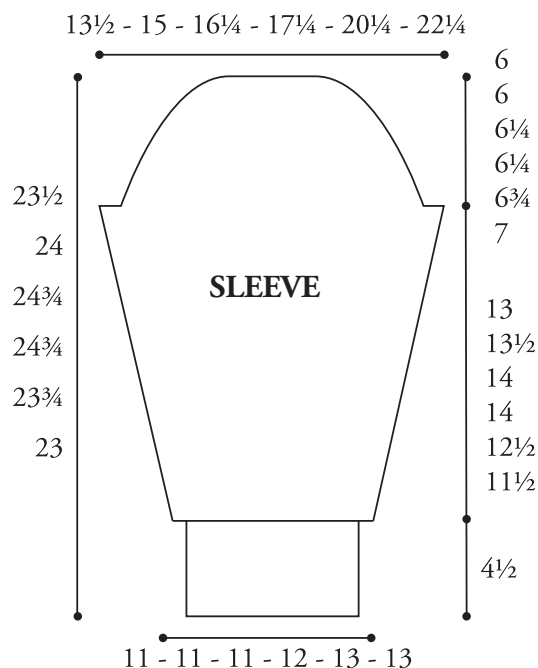
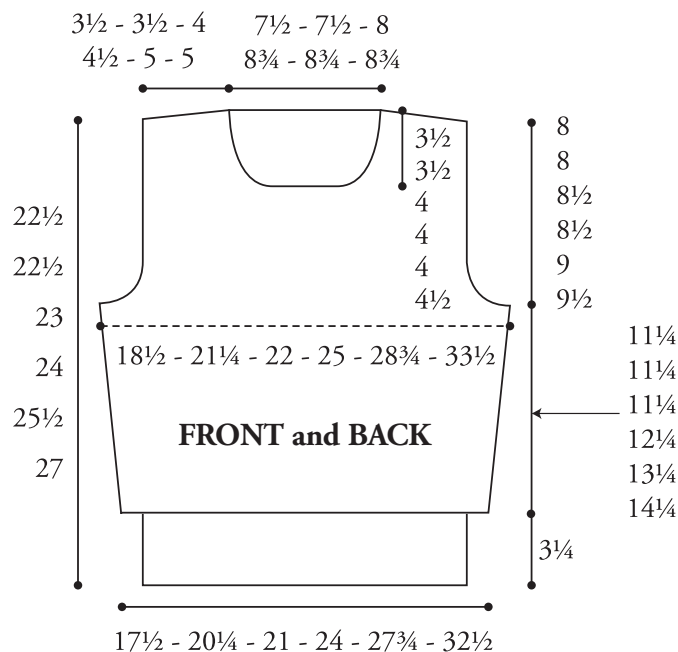
With RS of work facing and smaller needles, pick up and knit 15 (15-15-16-18-18) sts down left front neck edge. Pat 34 (34-34-36-38-40) sts from front st holder. Pick up and knit 15 (15-15-16-18-18) sts up right front neck edge. Pat 44 (44-44-46-48-50) sts from back st holder. 108 (108-108-114-122-126) sts.

1st row: (WS). (K1. P1) 33 (33-33-36-37-37) times. K7 (7-7-6-7-7). P6. K7 (7-7-6-7-7). Place marker on needle. *P1. K1. Rep from * to end of row.

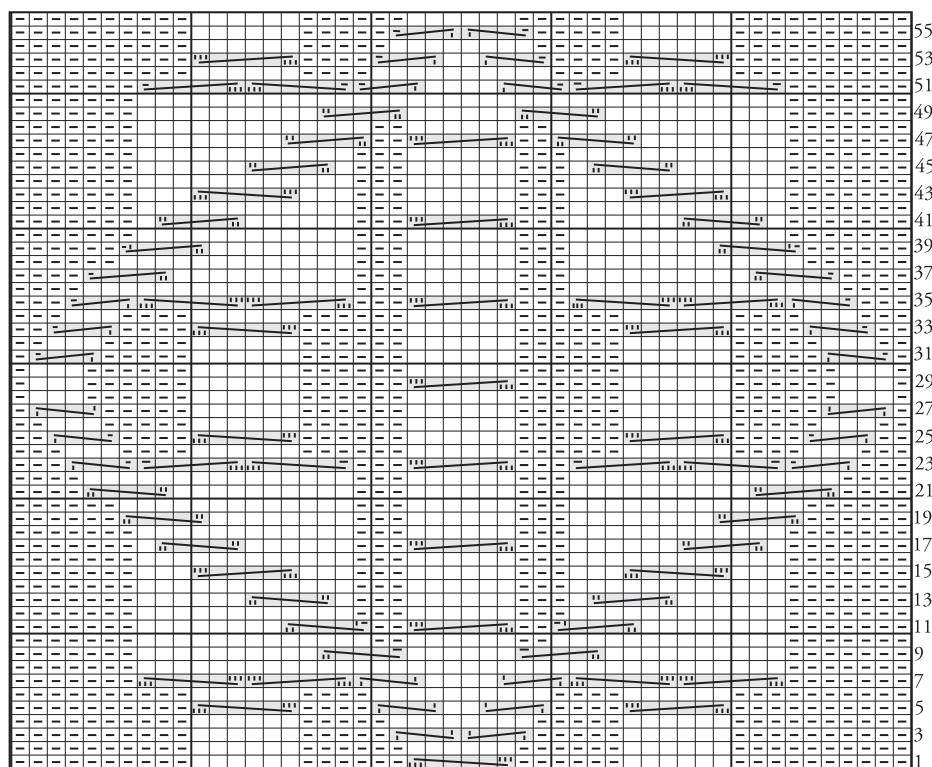
2nd row: *P1. K1. Rep from * to marker. P7 (7-7-6-7-7). K6 or C6B. P7 (7-7-6-7-7). **P1. K1. Rep from ** to end of row.

Rep last 2 rows for 3 ins [7.5 cm]. Cast off in pat.

Sew left shoulder and collar seam. Sew in sleeves. Sew side and sleeve seams.



PANEL PAT A



Start Here

KEY

- = Knit on RS and purl on WS.
- = Purl on RS and knit on WS.

- = C4B
- = C4F
- = T4B
- = T4F
- = C5B
- = C5F
- = T5B
- = T5F
- = TW5B
- = TW5F
- = C6B
- = C6F
- = T6B
- = T6F



P.O. Box 40, Listowel ON N4W 3H3
 "home style... life style... your style."